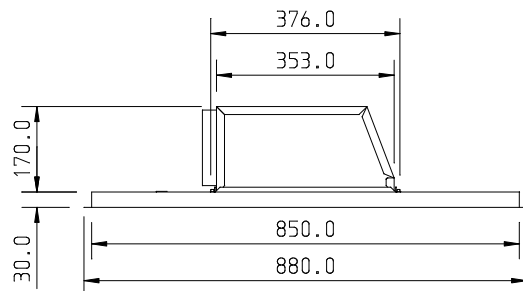
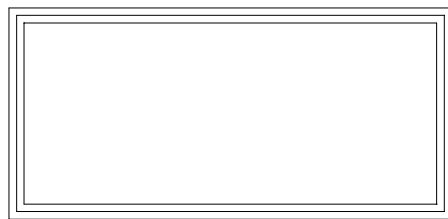


Plan View showing fixing centres



Front View

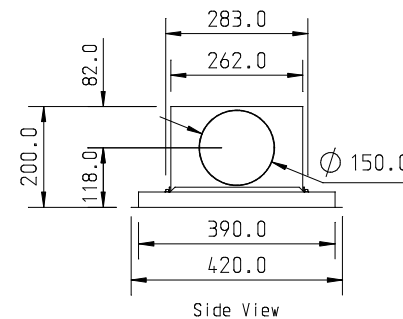


View from Underneath

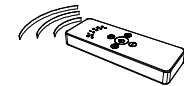
Notes: Ceiling units usually have fixing points hidden behind the lights, however, this unit has no lights so fixing points are behind the drop down panel. Fixings will therefore be visible when the panel is open.

The fixing points are shown on the plan elevation.

Whilst this extractor has no lights there will be a light switch on the remote controller. In order that this switch may have some function our unit will have a 230Vac electrical output (LN&Earth flex) that will be switched on/off when the light switch is pressed. This can be used to power your own lights (up to 100W) installed close to or flanking the unit or simply ignored according to preference.



Side View



Radio Remote Control

Cutout Details: Width 860 x Depth 400

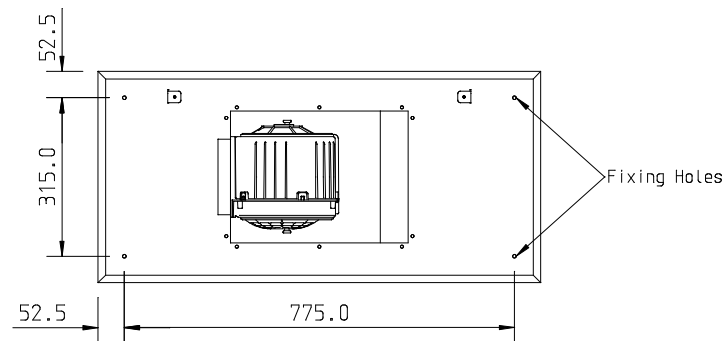
Duct Position: Left (factory default), Right, Front, Rear and Top.

The top box is easily separated from the baseplate and can be rotated through 180 degrees in order to achieve all possible outlet directions.

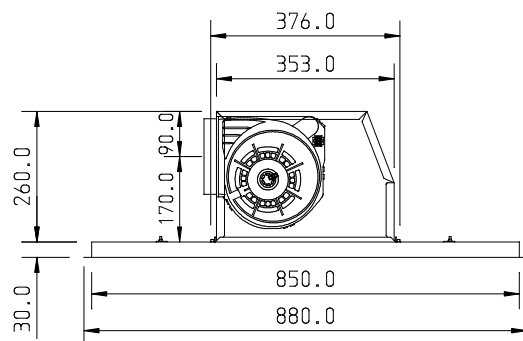
The ducting spigot must be set to the required outlet position prior to installation (see instruction manual).

Motor is controlled via radio remote control.

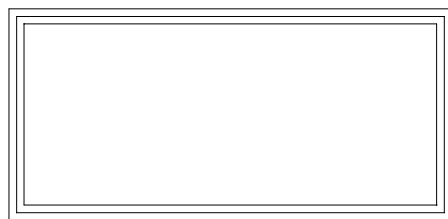
Extractor is painted SEMI GLOSS WHITE - RAL9003



Plan View showing fixing centres



Front View

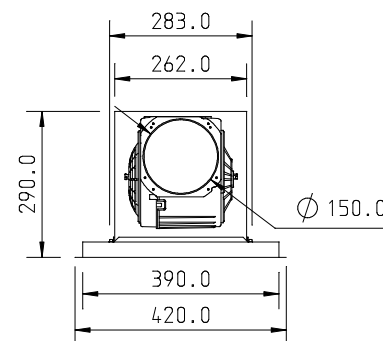


View from Underneath

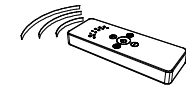
Notes: Ceiling units usually have fixing points hidden behind the lights, however, this unit has no lights so fixing points are behind the drop down panel. Fixings will therefore be visible when the panel is open.

The fixing points are shown on the plan elevation.

Whilst this extractor has no lights there will be a light switch on the remote controller. In order that this switch may have some function our unit will have a 230Vac electrical output (LN&Earth flex) that will be switched on/off when the light switch is pressed. This can be used to power your own lights (up to 100W) installed close to or flanking the unit or simply ignored according to preference.



Side View



Radio Remote Control

Cutout Details: Width 860 x Depth 400

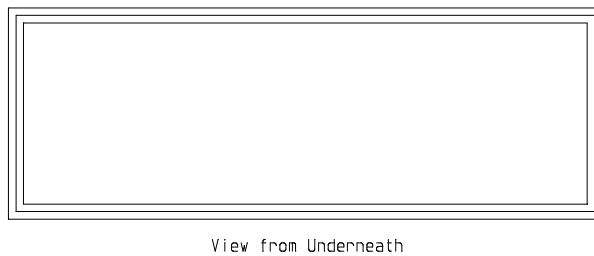
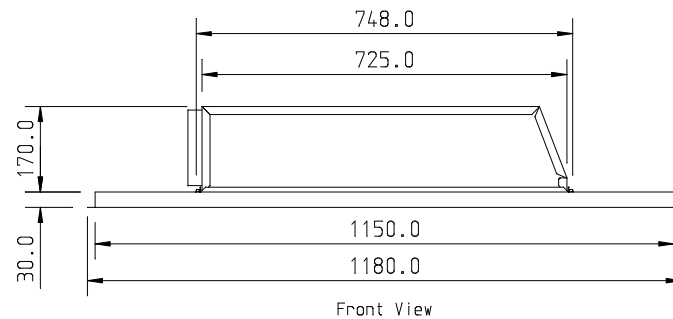
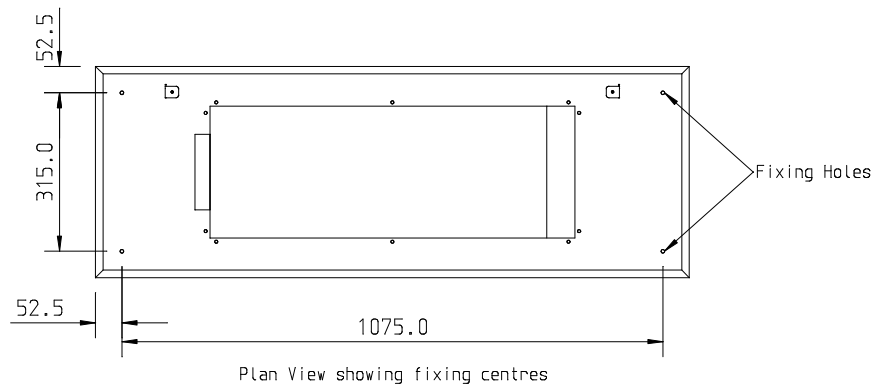
Duct Position: Left (factory default), Right, Front, Rear and Top.

The top box is easily separated from the baseplate and can be rotated through 180 degrees in order to achieve all possible outlet directions.

The ducting spigot must be set to the required outlet position prior to installation (see instruction manual).

Motor is controlled via radio remote control.

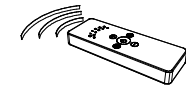
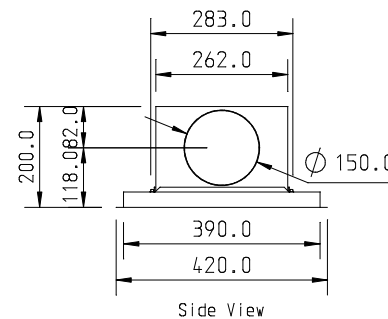
Extractor is painted SEMI GLOSS WHITE - RAL9003



Notes: Ceiling units usually have fixing points hidden behind the lights, however, this unit has no lights so fixing points are behind the drop down panel. Fixings will therefore be visible when the panel is open.

The fixing points are shown on the plan elevation.

Whilst this extractor has no lights there will be a light switch on the remote controller. In order that this switch may have some function our unit will have a 230Vac electrical output (LN&Earth flex) that will be switched on/off when the light switch is pressed. This can be used to power your own lights (up to 100W) installed close to or flanking the unit or simply ignored according to preference.



Radio Remote Control

Cutout Details: Width 1160 x Depth 400

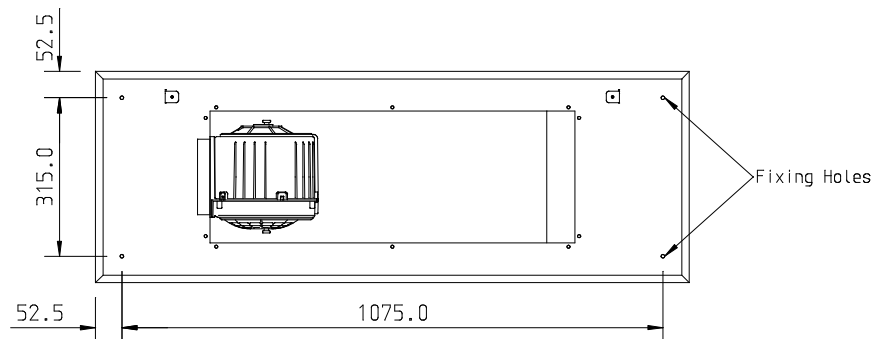
Duct Position: Left (factory default), Right, Front, Rear and Top.

The top box is easily separated from the baseplate and can be rotated through 180 degrees in order to achieve all possible outlet directions.

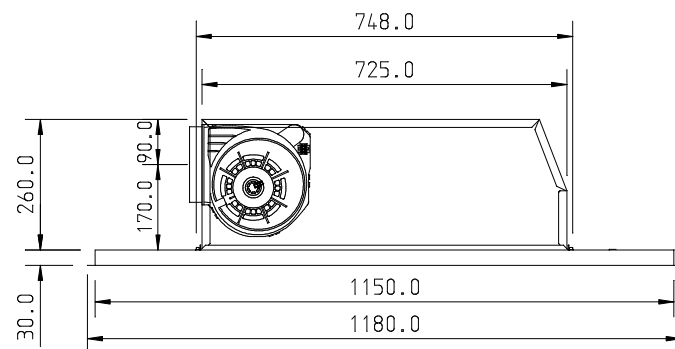
The ducting spigot must be set to the required outlet position prior to installation (see instruction manual).

Motor is controlled via radio remote control.

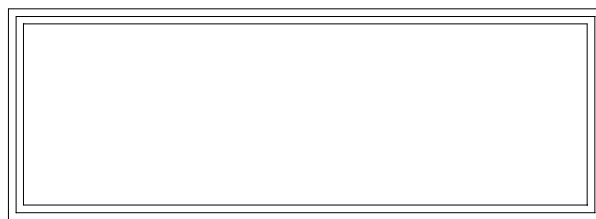
Extractor is painted SEMI GLOSS WHITE - RAL9003



Plan View showing fixing centres



Front View

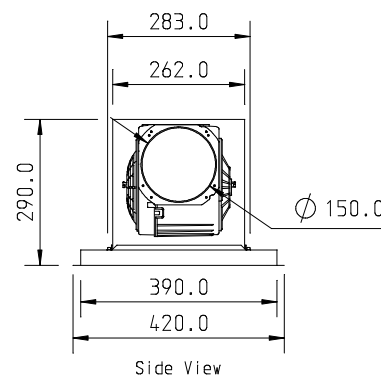


View from Underneath

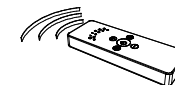
Notes: Ceiling units usually have fixing points hidden behind the lights, however, this unit has no lights so fixing points are behind the drop down panel. Fixings will therefore be visible when the panel is open.

The fixing points are shown on the plan elevation.

Whilst this extractor has no lights there will be a light switch on the remote controller. In order that this switch may have some function our unit will have a 230Vac electrical output (LN&Earth flex) that will be switched on/off when the light switch is pressed. This can be used to power your own lights (up to 100W) installed close to or flanking the unit or simply ignored according to preference.



Side View



Radio Remote Control

Cutout Details: Width 1160 x Depth 400

Duct Position: Left (factory default), Right, Front, Rear and Top.

The top box is easily separated from the baseplate and can be rotated through 180 degrees in order to achieve all possible outlet directions.

The ducting spigot must be set to the required outlet position prior to installation (see instruction manual).

Motor is controlled via radio remote control.

Extractor is painted SEMI GLOSS WHITE - RAL9003